





PREVENT

Signatories		
Head of School	Mrs C Brown	
Chair of Governors	Mr L Geary	

Review	
Dated	September 2024
Next review	September 2026

This policy is available on our school website and is available on request from the school office.

Member of Staff Responsible: Designated Safeguarding Lead – S Palmer

This policy will be reviewed at least annually and/or following any updates to national and local guidance and procedures

## Context

The Academy of Woodlands recognises that pupils can be vulnerable to extremist ideology and radicalisation, and we are committed to protecting pupils from this risk as part of our safeguarding responsibilities.

Our commitment to safeguarding pupils against extremism, radicalisation and terrorism includes interventions and collaboration with other agencies including the police and the LA where appropriate and as required.

We support and will adhere to guidance from the DfE which requires schools to actively promote fundamental British values in order to enable pupils to challenge extremist views and ensure that pupils are encouraged to regard people of all faiths, races and cultures with respect and tolerance.

This policy relates to the potential radicalisation of pupils at our school. For guidance on specific terrorist incidents, please see our Lockdown and Evacuation Policy and procedures.

## Legal Framework

This policy has due regard to all relevant legislation and statutory guidance including, but not limited to, the following:

- Children Act 1989
- Education Act 1996
- Counter-Terrorism and Security Act 2015
- Childcare Act 2006
- Data Protection Act 2018
- UK GDPR

This policy also has due regard to statutory and non-statutory departmental advice, including, but not limited to, the following:

- DfE (2015) 'The Prevent duty'
- HM Government (2021) 'Revised Prevent Duty Guidance: for England and Wales'
- DfE (2024) "Keeping children safe in education 2024" (KCSIE)
- DfE (2023) "Working Together to Safeguard Children"
- Home Office (2021) 'Channel Duty guidance: protecting people vulnerable to being drawn into terrorism'

This policy operates in conjunction with the following school policies and documents:

- Lockdown and Evacuation Policy
- Child Protection and Safeguarding Policy
- Prevent Risk Assessment
- Data Protection Policy (Trust)
- Online Safety Policy (Trust)

## Definitions

For the purpose of this policy:

**Extremism** – is defined as vocal or active opposition to fundamental British values, including democracy, the rule of law, individual liberty and the mutual respect and tolerance of different faiths and beliefs. This includes calling for the death of members of the armed forces.

**Radicalisation** – Is the process of a person legitimising support for, or use of, terrorist violence.

**Terrorism** – Is defined as an action that endangers or causes serious violence to a person/people; causes serious damage to property; or seriously interferes or disrupts an electronic system. The use or threat must be designed to influence the government or to intimidate the public and is made for the purpose of advancing a political, religious or ideological cause.

## Roles and Responsibilities

### The Headteacher is responsible for:

- The overall implementation and management of this policy.
- Ensuring every staff member is familiar with the scope of this policy.
- Ensuring pupils are taught about British values through the curriculum.
- Ensuring the school is a safe space in which pupils can understand and discuss sensitive topics, including terrorism and extremism, and are able to challenge these ideas.
- Undertaking a risk assessment to determine whether pupils are at risk of being drawn into terrorism.
- Identifying extremist risks in the local area.
- Ensuring any visitors and speakers at the school are appropriate and vetted prior to them having access to pupils.

### The DSL's at each provision, and deputies, are responsible for:

- Handling any referrals to the Channel programme and supporting staff who make referrals to Channel.
- Following up any referrals made to the Channel programme.
- Provide advice and support to staff on protecting pupils from the risk of radicalisation.
- Delivering staff training on the Prevent duty.
- Working with external agencies to support pupils at risk of being drawn into terrorism.
- Providing guidance to other staff members to help them support pupils at risk of being drawn into terrorism.

- Understanding local procedures for making a Prevent referral and making Prevent referrals where appropriate.
- Considering if it would be appropriate to share any information with a new school in advance of a pupil leaving, e.g. if the pupil is currently receiving support through the 'Channel' programme and the information would allow the new setting to have support in place for when the pupil arrives.

All staff members are responsible for:

- Being alert to the risk factors of extremism and radicalisation and any changes in a pupil's behaviour which could indicate that they may need help or protection.
- Raising any concerns with the DSL (or any deputies, in their absence).
- Notifying the DSL (or any deputies, in their absence) when they make any referrals to the Channel programme.
- Engaging in staff training on the Prevent duty.
- Using their professional judgement to identify pupils who may be at risk of radicalisation and acting proportionately.

Safeguarding from Extremism

The school protects the right to freedom of expression. This policy is not intended or designed to restrict or prevent legitimate and lawful congregation or debate.

**Prevent Duty 2023**

The school has a dedicated DDSL/Prevent Lead who deals with any incidents of extremism and/or terrorism within our school community. As is the school's responsibility under law, we will do our utmost to safeguard our pupils from being drawn into extremism and terrorism.

The school has strong relationships with our local safeguarding partners, and will involve them at the earliest opportunity if safeguarding issues arise.

The school encourages any pupil, parent/carer, staff member or member of the wider school community to speak to the DSL if they have concerns about:

- Pupils becoming radicalised.
- Groups, clubs or societies with extremist or radical views.
- Friends and/or families of pupils becoming radicalised or involved in extremism.
- Pupils planning to visit known areas of conflict.
- Members of the school and wider community attempting to draw young and/or vulnerable pupils into extremism.

Visitors and speakers coming into the school will be vetted prior to them having access to pupils. All materials handed out to pupils, whether by teachers or visitors and speakers, will be checked by the Deputy Headteacher/DSL and Prevent

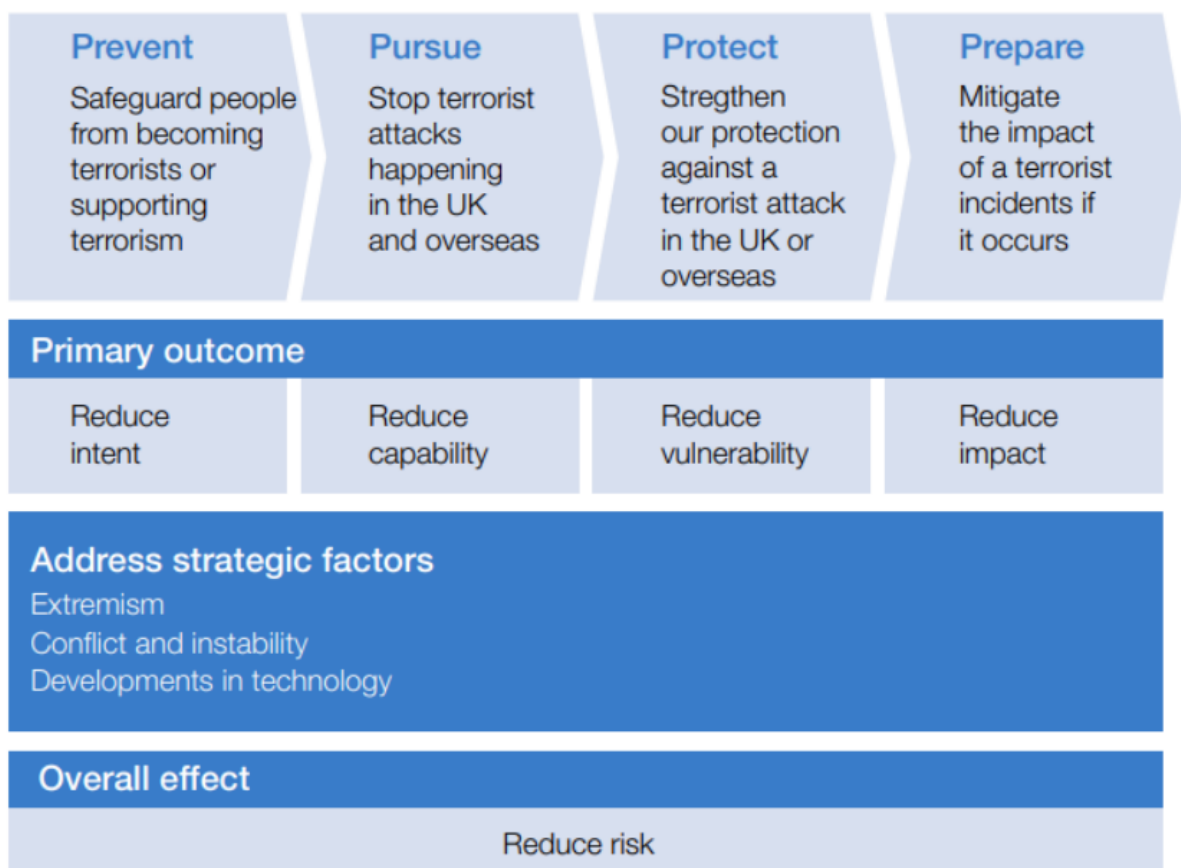
Lead/DDSL. Pupil-led groups, clubs and societies will be subject to unannounced inspections by the DSL.

### **CONTEST STRATEGY 2023**

Counter-terrorism strategy (CONTEST)

The aim of CONTEST is to reduce the risk to the UK and its interests overseas from terrorism, so that people can go about their lives freely and with confidence.

The Government's counter-terrorism strategy will continue to be organised around four workstreams, each comprising a number of key objectives



### **Prevent Duty 2023**

The Academy of Woodlands is subject to a duty under section 26 of the Counter-Terrorism and

Security Act 2015 (the CTSA 2015), in the exercise of their functions, to have “due regard to the need to prevent people from being drawn into terrorism”. This duty is known as the Prevent duty which has 3 key objectives:

- respond to the ideological challenge of terrorism
- support vulnerable people and prevent people from being drawn into terrorism

- work with key sectors and institutions to address the risks of radicalisation

The Prevent duty is embedded into The Academy of Woodlands' safeguarding obligations and the Designated safeguarding leads and other senior leaders are aware of local procedures for making a Prevent referral.

### CHANNEL PROGRAMME

Channel, a key element of the Home Office's CONTEST STRATEGY, is a multi-agency programme designed to safeguard and support vulnerable individuals at risks of being drawn into terrorism. The Academy of Woodlands will work with the Local Authority, local law enforcement, and religious and community leaders, to identify children vulnerable to radicalisation and to challenge extremism if it arises. This includes identifying pupils to whom any of the following criteria applies:

- Displaying feelings of grievance and injustice
- Feeling under threat
- Searching for identity, meaning and belonging
- Displaying a desire for status amongst their peers
- Displaying a desire for excitement and adventure
- Displaying a need to dominate and control others
- Displaying a susceptibility to indoctrination
- Displaying a radical desire for political or moral change
- Appearing susceptible to opportunistic involvement
- Having family or friends involved in extremism
- Appearing susceptible to being influenced or controlled by a group
- Displaying relevant mental health issues

The school will cooperate with local panels involved in the Channel process. A representative of the school will attend meetings as required to aid the mitigation of identified risk and vulnerabilities. This includes contributing towards the support plan and sharing information necessary and proportionate to the effective working of the panel.

### PREVENTING RADICALISATION

The school will assess the risk of learners being drawn into terrorism through identifying the factors that affect children in the local area and knowing how to identify those at risk.

Allegations and concerns of radicalisation and/or terrorism will always be taken seriously, and staff will act proportionately, which may include making a Prevent referral. Where appropriate, learners will be helped to channel their desire for excitement and adventure into suitable and healthy activities.

Extremist propaganda is widely available online – the school will ensure that British values are promoted regularly to encourage learners to develop an appreciation of society. The school will work with local religious and cultural organisations to instil a strong sense of identity in our learners, as well as a clear place and purpose within the school.

The school recognises that learners' parents, carers and families are best placed to spot signs of radicalisation and, as such, will promote effective engagement with parents, carers and families.

All internet activity that takes place on site will be recorded, as well as activity on any school-owned computers, laptops and tablets off site, and appropriate filters will be installed to protect children from terrorist and extremist material online, in accordance with the Online Safety Policy. In accordance with KCSIE and our Child Protection and Safeguarding Policy, learners will be taught about the importance of staying safe online through IT, PSHE lessons, 5 Ways to Wellbeing and Assemblies.

We will always aim to integrate and engage every child within the school community, and in the wider community. A range of different religious and cultural festivals will be celebrated across the year giving every learner the opportunity to take part.